



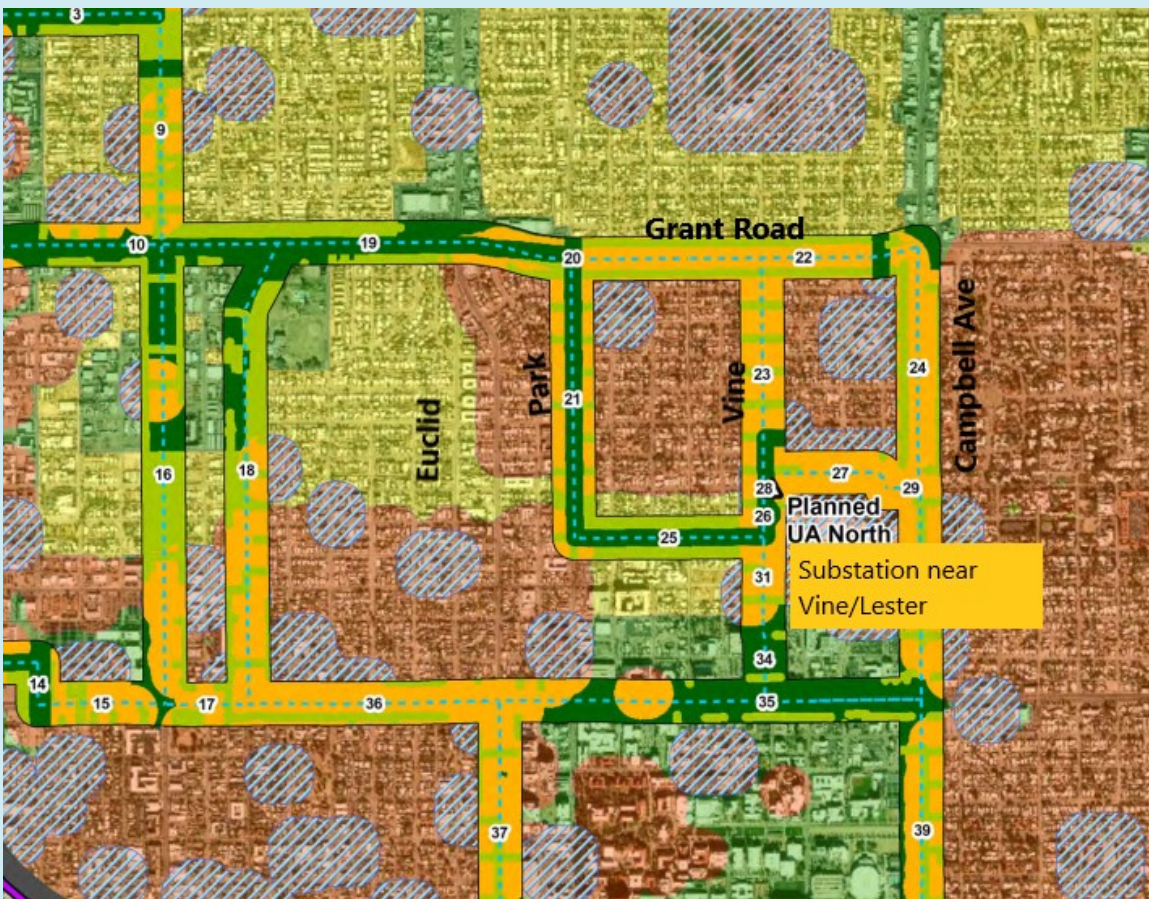
JEFFERSON PARK

HISTORIC NEIGHBORHOOD

Websites: jeffersonpark.info and grantroadcoalition.com Feb 14, 2020
For previous editions of Jefferson Park newsletters [CLICK HERE.](#)

INFORMATION MEETING FOR JEFF PARK

Proposed 138Kv poles through Jefferson Park?

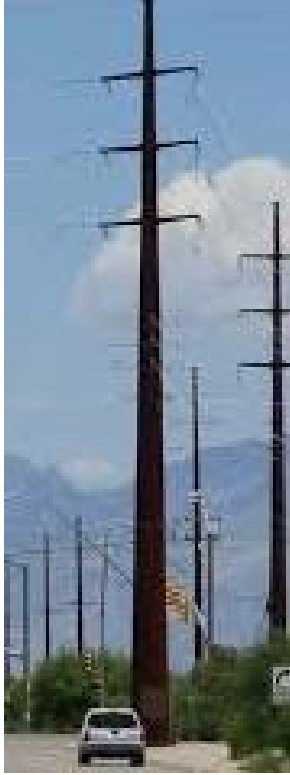


MAP: Yellow and Green streets are under consideration for the 138Kv Power Pole lines
Vine and Park being considered

JPNA Information Meeting

Wednesday, February 26,
6pm, Ward III 1510 E Grant

TEP is planning a project to bring more electricity to the inner city. The load will increase from 47Kv to 138Kv requiring much larger poles and a substation at the southern edge of Jefferson Park.



138Kv Poles

Jefferson Park is one of the **MOST IMPACTED** neighborhoods in the entire project. The substation insulated with SF6 gas is located at our border and where will the giant poles be placed? See proposed routes on map above.

This is your opportunity to directly address TEP with your concerns.

138Kv Power poles - Images from TEP website. Poles can be 75" - 110 ft" tall (7-9 story building) They can be 3 Feet or more at the base. Typical neighborhood poles are 30 feet. Potential impact on property values unconfirmed and depends on neighborhood. EMF decreases by distance from wires.

To see former E-newsletters (Nov 9, Nov 18, Dec 7 and Jan 7) outlining the issue go to: <http://www.jeffersonpark.info/nwsltrs.html>

February Meetings

JPNA NEIGHBORHOOD MEETING

Wednesday, February 26, 6 pm, Ward III, 1510 E Grant

TEP representatives discussing 138kV Poles and Substation at Lester Neighbors Q & A

Adriana Mariñez - Government Relations

Renee Darling - Transmission and Distribution Supervisor

GRANT ROAD COALITION

No meeting in February

<http://www.grantroadcoalition.com>

SAFETY COALITION MEETING

Mailbox Theft

Tuesday, February 25, 6:30, Ward III, 1510 E Grant Road

Postal Inspector to talk about Mailbox theft

GET READY



Jefferson Park pick up in alleys

PLUS Services Include

- Brush & Bulky pick-up
- Graffiti removal
- Right-of-way maintenance
- Removal of overgrowth vegetation
- Clean-up of illegal dumping
- Repair potholes
- Street sweeping

PLUS SERVICES INCLUDE:

- **REMOVAL OF OVERGROWTH AND LITTER IN RIGHTS-OF-WAY AND WASHES**
- **CLEAN-UP OF ILLEGAL DUMPING**
- **GRAFFITI REMOVAL**
- **STREET SIGN REPAIRS OR REPLACEMENT**
- **POTHOLE REPAIR**
- **STREET SWEEPING**

COLLECTION AND CLEAN UP TIME

(Please have materials set out by 6 a.m. on Monday of your collection week. Do not put materials out more than two weeks ahead of your scheduled collection.)

Brush & Bulky will collect:

- Brush, tree trunks, branches and other green waste (up to 5 feet long and 24 inches in diameter)
- Lumber (up to 5 feet long and stacked in a separate pile)
- PVC and metal pipes (up to 5 feet long)
- Railroad ties (limit 5)
- Furniture, carpet, and doors
- Lawn mowers with fuel tank and crank case removed

- Scrap metal (bicycles, swing sets, etc., broken into 5 foot lengths)
- Cacti (must be contained in a box - up to 25 lbs.)
- Appliances (remove freezer/refrigerator doors)
- Car tires (limit of five automobile tires. Tires must be separated from pile. A separate truck will pick them up within the week.)
- Metal drums (empty and cut in half)

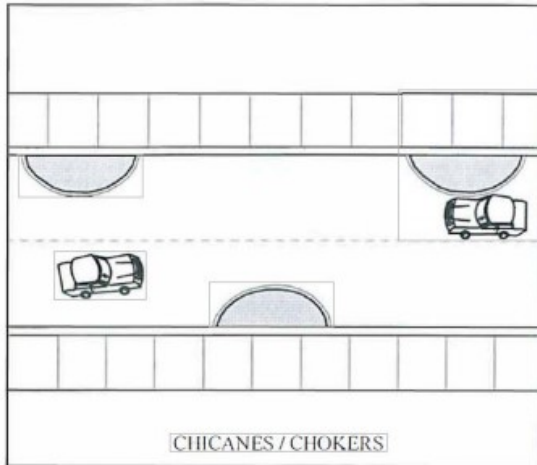
Brush and Bulky will NOT collect:

Any excess over the 10 cubic-yard limit (1 cubic-yard roughly the size of a washing machine)

- Any items other than those listed above, such as
- Stone/bricks/concrete/aggregates/tile
- Construction debris (such as asphalt, roofing material, drywall, etc.)
- Hazardous waste like paint/oil/pesticides/solvents/liquids (take to household hazardous waste)
- Glass/mirrors
- Compressed gas/air cylinder(s)
- Vehicle parts
- Ammunition

- Commercially generated material
- *VISIT [tucsonaz.gov/es/brush-and-bulky](https://www.tucsonaz.gov/es/brush-and-bulky) for more information

Jefferson Park Traffic Advisory Committee



Chicanes and Chokers

Effects/Impacts

Minor decrease in traffic for 2-lane and 20% reduction of one-lane chokers. Maneuvering through the chicanes may reduce the comfort level of some motorists encouraging them to take an alternative route.

Speed:

Effective as a speed reduction technique on local streets.

Note:

Adequate Drainage is a key consideration. Provides opportunity for landscaping. Can impact parking and driveway access. from:

https://www.tucsonaz.gov/files/transportation/files/NTMP_Mailing_Manual_3-13-18.pdf

Want to have a say in the traffic safety in Jefferson Park? Contact Zach MacDonald to join the group discussion. azacamaca@gmail.com

Gateway Signs for Jefferson Park in 2020!



Progress! The tile sign is being grouted.

Health and Heritage Trail

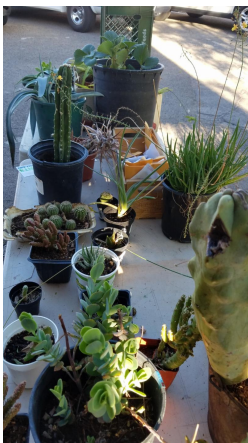
Latest update from Parks and Recreation: *"The project is out to Bid. Bid Proposals are due Tuesday March 3, 2020. I have 6 contractors providing proposals. Once I review all the proposals (1-2 days) I will contact YOU."* Joe, O'Neil, Project Manager

Jefferson Park anxiously awaits the first earth mover! This Health and Heritage Linear Park will ALMOST connect Part to Mountain. The walking, biking trail will be a pleasure for all!





April 25 - Plant Sale



Help make this Fundraiser a success!!

Donate * Buy * Volunteer

Call Laurel-Heather: 520-343-0073 or trdswmn@cox.net

Saturday, April 25 8 am - 1 pm

NE Corner of Warren and Seneca

1641 E Waverly

In addition to potted plants we will sell gently used gardening tools, bags of soil, pots, gloves, and garden art.

CLIPPINGS/SPROUTS but no pots? Laurel-Heather will take your clippings/sprouts, pot, and tend to them until the sale. Contact her!

March Events at IST

Annual Dinner 2020

Sunday March 1

The International School's Annual Fundraising Dinner will be held on Sunday, March 1, from 4- 8 pm at the historic Stillwell House. Tickets are \$80/each and can be purchased at: <https://www.biddingforgood.com/ist>

International Day – Saturday, March 7th Mark your calendars now!

IST's 14th Annual International Day will be held on Saturday, March 7 from 10 am - 2 pm. IST families, friends and teachers host booths by country from around the world, [ISTPAWebsite \(https://istpaweb.wixsite.com/istpa/international-day\)](https://istpaweb.wixsite.com/istpa/international-day)



All are invited to Support IST!

International Day

March 7 * 10 am to 2pm

Come on over

Update - Census Information

United States® Census 2020



Snail-mail form comes Between March 1-20

There are three ways to respond:

1. Secure Internet: go online and fill in questionnaire. It's safe, secure and confidential.
2. By phone: Census worker will take your information via phone.
3. By Mail: you request and fill out paper form. Return via mail.

**If you don't respond...a
worker will visit in person in May.**

NOTE: The Census Bureau will *never* ask you for:

- Your Social Security number.
- Money or donations.
- Anything on behalf of a political party.
- Your bank or credit card account numbers.

If someone claiming to be from the Census Bureau asks you for any of these things, it's a scam, and you should not cooperate. To find out more about the 2020 Census, and to avoid scams and fraud, go to www.2020census.gov.

Confused about what you can and CAN NOT recycle?

Every program across the country has a different list of what is acceptable. The number that is sometimes inside the recycle symbol is a reference to what type of plastic the container is made of.

Here is our recycling list: tucsonaz.gov/recycle

No doubt about it, recycling can be confusing. Markets for recyclables have changed considerably, profitability of recycling has gone down, and contamination of loads has gone up. Become educated and read the article below from Tucson.com

[CLICK HERE](#)

to read an extremely informative article on what can and cannot be recycled, and it is TUCSON specific.

EDISON Parklet needs you once a month

3rd Saturday of the month - 8:00 am

No RSVP needed, just show up about 8am. BYOB-bring your own bag...or we supply. Clean up is quick - we usually take less than an hour. If you do pick up trash during the week, contact Joanne Osuna at cricket16@cox.net and your time will count. We report our hours to Tucson Clean and Beautiful as part of the Adopt-a-Park Program.

Homeless Protocol

See a homeless person camping out? The City of Tucson has a homeless protocol which brings TPD out to offer people options. How to report is described at

https://www.tucsonaz.gov/files/hcd/City_of_Tucson_Homeless_Protocol_9.20.18.pdf

If Emergency: 911

Non-emergency: 520-791-4467; Neighbors can report homeless issues and the like. They will get it to the correct department.

SPECIAL THANK YOU'S !



Thanks to the business and individuals who support Jefferson Park with their donations! We appreciate you!

Thanks Zach for donating to our Entryway Signs!

And Blackjack, thanks for the deal on our annual meeting of JPNA.

Thanks to Carly Quinn for the donation of 1/2 of cost of our gateway signs!

Reporting a Dirty Bus Stop

If you see overflowing trash cans, litter, bugs, vandalism, graffiti, or homeless camps at a bus stop, call (520) 792-9222 to report the location. You may also email SunTranInfo@tucsonaz.gov and include pictures if you wish. All requests will be documented by Sun Tran to ensure proper follow-up takes place. Sun Tran: <http://bit.ly/1mZ71Jl>

QUICK LINKS

City Services "Cheat Sheet" has links, emails, and phone numbers to make it easier to reach anyone in the City based on your need.

<https://www.tucsonaz.gov/i-want-to>

2020 Roll-off/Brush & Bulky Schedule



February 24 - Brush and Bulky
April 2 - Roll Offs, May 14 - Roll-offs

August 31 - Brush and Bulky
December 11 - Roll-offs

Scooters blocking driveways, etc. Call 'em

Razor scooters will be picked up if you call 833-LAST-MILE. Contact info is also on the scooters.

Bird Scooters will be picked up if you call 1-866-205-2442. Contact info also on the scooters.



Numbers are posted on the scooters!

NEIGHBORHOOD CONTACTS FOR YOUR AREA

Area Representatives

Area #1 - Mary Worthen
worthenmm.6@gmail.com

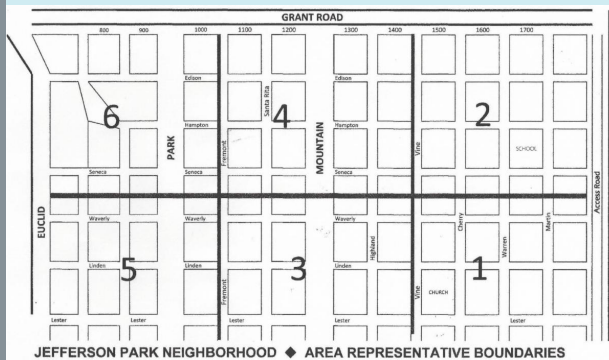
Area #2 - Jon Heine
isfjon@gmail.com

Area #3 - Laurel-Heather Milden
trdswmn@cox.net

Area #4 - Judy Janson
thejansons@cox.net

Area #5 - Joanne Osuna
cricket16@cox.net

Area #6 - Lisa Jones
iljonesk@aol.com



**Neighborhood Resources:
Recommended service Providers**
<http://www.jeffersonpark.info/service-providers-recommended-by-neighbors.html>

TPD Lead Officer for our area: Sgt. Eric Evans, 420-405-2070,
email: eric.evans@tucsonaz.gov.
On Duty: Sat- Tues, 5pm -3am

CRIME

non-emergency crime:
www.tucsonaz.gov/apps/crime-reporting/

emergency crime: 911

See the latest crimes in Jeff Park:
nsn.soaz.info/incidents/zjefferson.htm

See code violations in Jeff Park:
neighsupport.net/codevio/cezjefferson.html

Report an issue with Banner:
Emergency 24/7 (520) 268-9575
Helicopter Noise/ Banner Hospital
contact BUMC Security at 694-6533.

Report an issue with the U of A:
24/7 available (520) 282-3649

Report an unruly gathering: Call
911 [CLICK HERE](#) to see Flow Chart

See historic photos of Jefferson
Park: www.jeffersonpark.info/history.html

COUNCIL OFFICES AND NEWSLETTERS

WARD III COUNCIL CONTACTS

1510 E Grant* paul.durham@tucsonaz.gov

Ward III, See Paul's e-news at: www.tucsonaz.gov/ward-



WARD VI COUNCIL CONTACTS

Ward VI, Steve K's newsletter: www.tucsonaz.gov/ward-6/news

Get on the List Serve! To sign up for the neighborhood list serve, send a blank email to jeffersonparktucson+subscribe@googlegroups.com or send a request for an invitation to joanchall@yahoo.com

Facebook: Jefferson Park Pet Lost animals, found animals etc <https://www.facebook.com/Jefferson-Park-Neighborhood-Tucson-AZ-Pet-Page-695645730464933/>

Facebook: Jefferson Park: Interactive communications and neighborhood friendly posts <https://www.facebook.com/groups/1595530767355038/>

Report Transportation Concerns: Is there a pothole you'd like to see fixed? Is a street sign missing? Is a tree limb hanging too close over a roadway or sidewalk? You can report these issues to the **Tucson Department of Transportation** (TDOT), (520) 791-3154, or email the exact location to tdotsr@tucsonaz.gov

What is a code violation? And whom do I call? **Download** an information sheet approved by the City Code Enforcement Division

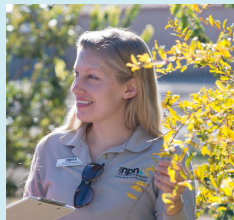
Editors' Note: This Constant Contact is sent only upon request and with permission. The editors, Joan Daniels, Erin Posthumus, and Joanne Osuna invite your comments.



jdchama@msn.com



cricket16@cox.net



erinposthumus@gmail.com



cnichols17@gmail.com

Thanks to the editors and co-editors who check and recheck the information we send out to our neighbors. If you see an error or have an addition, let one of us know.